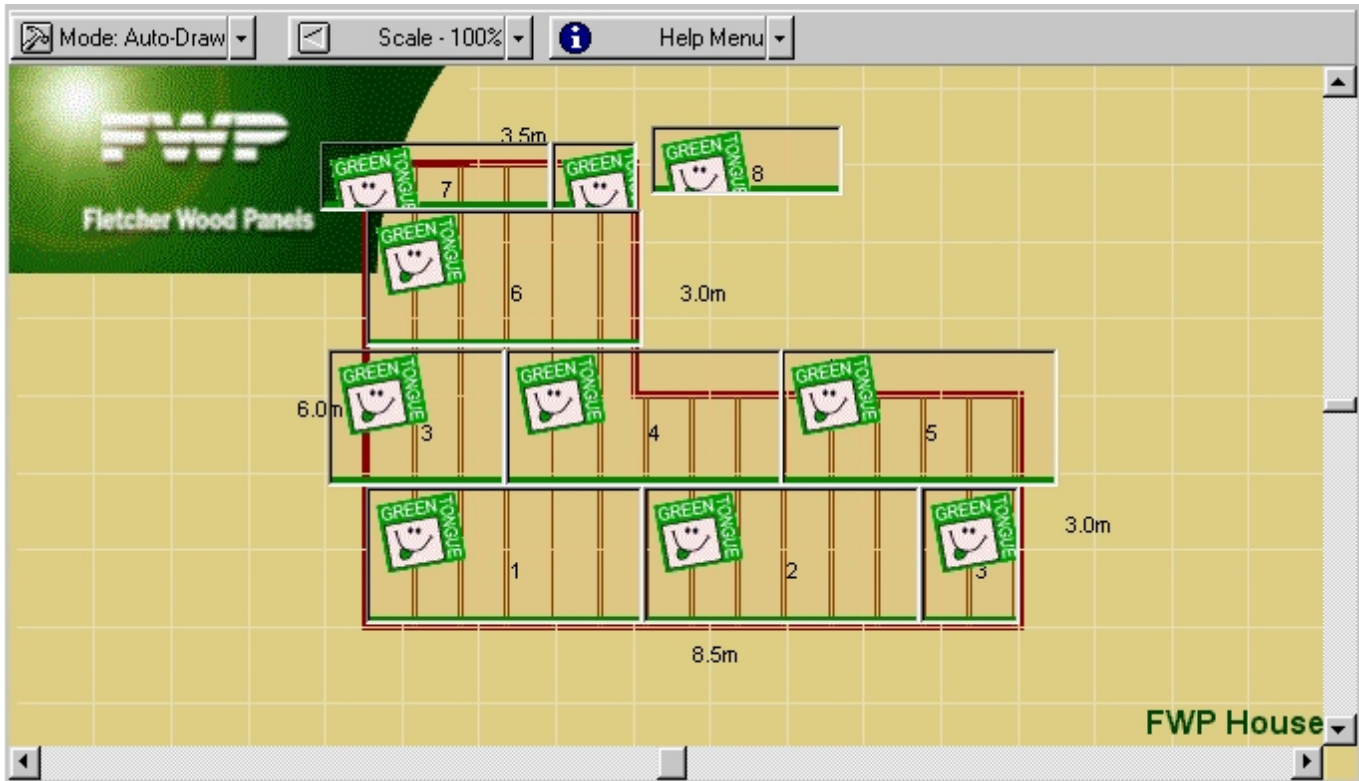




PLAN-A-FLOOR OPTIMISATION SOFTWARE



DESCRIPTION

Pynefloor Green Tongue Planafloor is a free web based software package that has been developed to help the builder or installer of Pynefloor Green Tongue select and layout particleboard flooring panels as easily and economically as possible. It can be accessed by clicking on the Tools button on Fletcher Wood Panels web site, www.fwp.co.nz

USES

This software can be used by the builder to calculate their flooring panel requirements. It will also calculate nail and adhesive requirements.

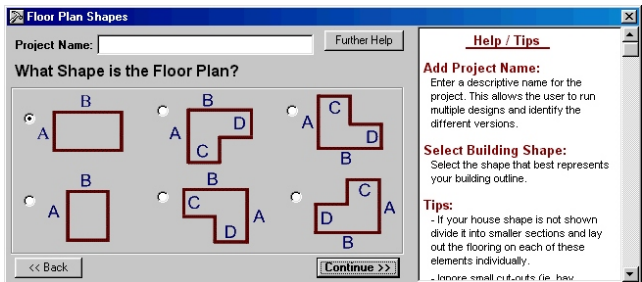
As the software generates a report including a diagram of the floor lay out, the report can also be used as an attachment to the builders order or can be used on the building site to indicate the pattern in which the floor should be laid to get the best result.

Builders merchants can also use the software to provide a service for their customers.

GETTING STARTED

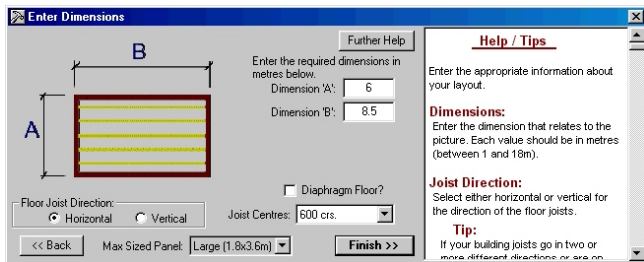
After accessing www.fwp.co.nz, click on the tools button then select Green Tongue Planafloor. The software will start (it takes a few minutes the first time) and the Floor Plan Shapes dialogue box will appear.

Type in project name, select the floor plan that best approximates your need and then click continue.



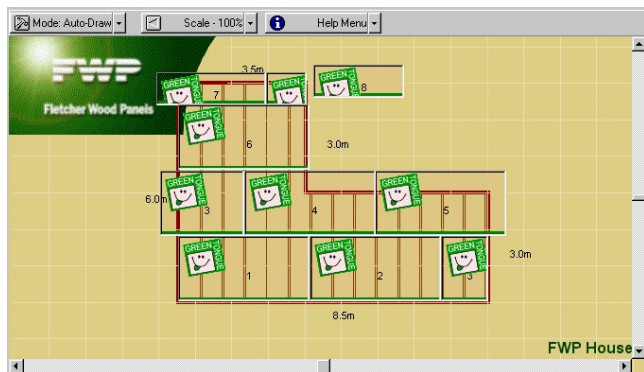
ENTER DIMENSIONS

In this section you can enter the building dimensions, select joist centres and direction as well as the preferred Green Tongue flooring panel size. After completing this, click finish.



LAY OUT

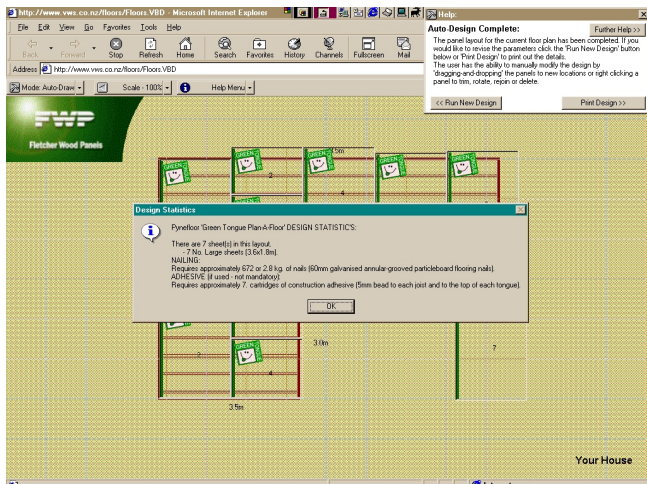
The software will then automatically lay out the Green Tongue flooring panels using any panel offcuts where appropriate.



DESIGN STATISTICS

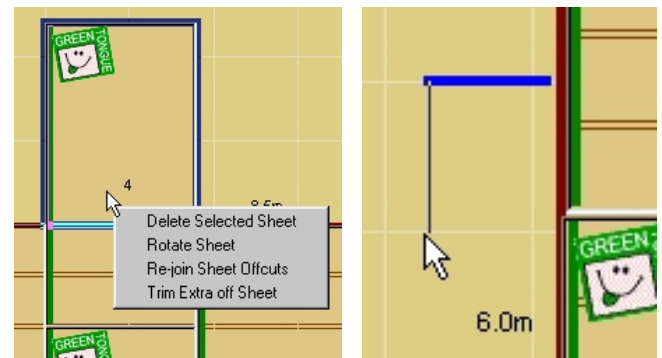
When the design layout has been completed, an on screen report appears which details the number and size of Green Tongue panels required along with the number of nails and amount of adhesive needed for the floor. The user can then alter the design to attempt to obtain better utilisation of offcuts at this point and then regenerate the on screen report if required. It will automatically update.

Click 'Run New Design' will clear the screen and return the user to the start of the process.



MODIFYING

The design can be modified to further optimise against panel waste. Adding walls is as simple as clicking and dragging.



PRINTING

Finally, by accessing 'Print Design', an A4 copy of the plan, together with full Design Statistics can be printed.

LIMITATIONS

Users should make themselves familiar with the Pynefloor technical literature, in particular the information on design, installation, layout, fixing, etc. All these principles have been incorporated into the software and are used as defaults where appropriate.

It is recommended that the new user visit the Plan-a-floor Help file first to become familiar with the scope and options that are available. Please also note the disclaimer at the end of the Tools page on the FWP web site.

Although the software will produce a solution, this is by no means the only or best answer. The user is able to make adjustments

FWP

Fletcher Wood Panels

A Division of Fletcher Building Products Limited

25 O'Rorke Road, Penrose, Auckland
P O Box 12 139, Auckland 1135, New Zealand
Phone +64-9-526 0700
Fax +64-9-579 1125

Marketing & International
Fax +64-9-579 0995

Customer Services
Phone 0800 800 080
Fax 0800 801 081

Website www.fwp.co.nz

© Copyright 2001 Fletcher Wood Panels, Auckland New Zealand